



# Beaufort County Public Works

## Stormwater Infrastructure

### Project Summary

**Project Summary: Storyteller Road Outfall**

Project #: 2011-562                      Completed: Jul-10

**Narrative Description of Project:**  
 Project improved 1,843 L.F. of drainage system. Shinn cut 383 L.F. of outfall ditch. Bush hogged 1,395 L.F. of outfall ditch. Cleaned out 1,460 L.F. of outfall ditch. Reconstructed 100 L.F. of workshelf. Installed (1) bleeder pipe. Jetted (1) access pipe and (1) crossline pipe. Hydroseeded for erosion control.

#### Material Cost, Rental Equipment Summary, and Labor

| Material   | Unit        | Cost/Unit | Qty   | Cost               |
|--|-------------|-----------|-------|--------------------|
| 12" HDPE Pipe  | linear feet | \$4.86    | 20.0  | \$97.20            |
| Fill Dirt  | ton         | \$1.00    | 42.4  | \$42.42            |
| Recycled Concrete  | ton         | \$1.00    | 70.9  | \$70.88            |
| 10-10-10 Fertilizer                                      | bag         | \$11.72   | 0.5   | \$5.86             |
| Hydromulch   | bale        | \$12.22   | 1.0   | \$12.22            |
| Hydrogel   | cup         | \$2.82    | 0.5   | \$1.41             |
| Hydromax Liquid Fertilizer                               | cup         | \$2.54    | 0.5   | \$1.27             |
| Brown Top Millet Grass Seed                              | bag         | \$21.40   | 0.5   | \$10.70            |
| Water  | gallon      | \$0.01    | 900.0 | \$9.00             |
| Pin Flag   | each        | \$0.06    | 17.0  | \$1.02             |
| Diesel   | gallon      | \$2.61    | 451.0 | \$1,177.11         |
| Gas  | gallon      | \$2.54    | 48.0  | \$121.92           |
| Labor  | hours       |           | 306.0 | \$6,888.45         |
| Indirect Labor, Services, and Supplies                   |             |           |       | \$4,865.22         |
| <b>Total Cost of Materials, Rental Equip., and Labor</b> |             |           |       | <b>\$13,304.68</b> |

Note: Labor cost includes the employee's salary plus fringe benefits.

#### Equipment Cost

| Item                | Asset No. | Cost/Hour | Hrs. | Cost       |
|---------------------|-----------|-----------|------|------------|
| Shinn Cutter        | 22943     | \$35.74   | 7.0  | \$250.18   |
| Volvo 290 Excavator | 22870     | \$54.13   | 22.0 | \$1,190.86 |
| JD Loader 444J      | 23271     | \$29.75   | 4.0  | \$119.00   |
| Bobcat T320         | 23388     | \$21.00   | 4.0  | \$84.00    |
| Bush Hog            | 23362     | \$29.88   | 8.0  | \$239.04   |
| Lowboy              | 23118     | \$34.64   | 11.5 | \$398.36   |
| Vacuum Truck        | 22812     | \$22.16   | 5.0  | \$110.80   |

#### Site Photographs

Before



During



After



**Storyteller Road Outfall Project Summary Con't**

Project #: 2011-562

**Equipment Cost**

| Item                        | Asset No. | Cost/Hour | Hrs. | Cost              |
|-----------------------------|-----------|-----------|------|-------------------|
| Hydroseeder                 | 23474     | \$12.44   | 1.0  | \$12.44           |
| Dump Trucks                 |           | \$13.31   | 66.0 | \$878.46          |
| Pickup Trucks               |           | \$4.12    | 99.0 | \$407.88          |
| <b>Total Equipment Cost</b> |           |           |      | <b>\$3,691.02</b> |

Cost/hour excludes fuel cost.

Total Cost: \$16,995.70

**Site Photographs**

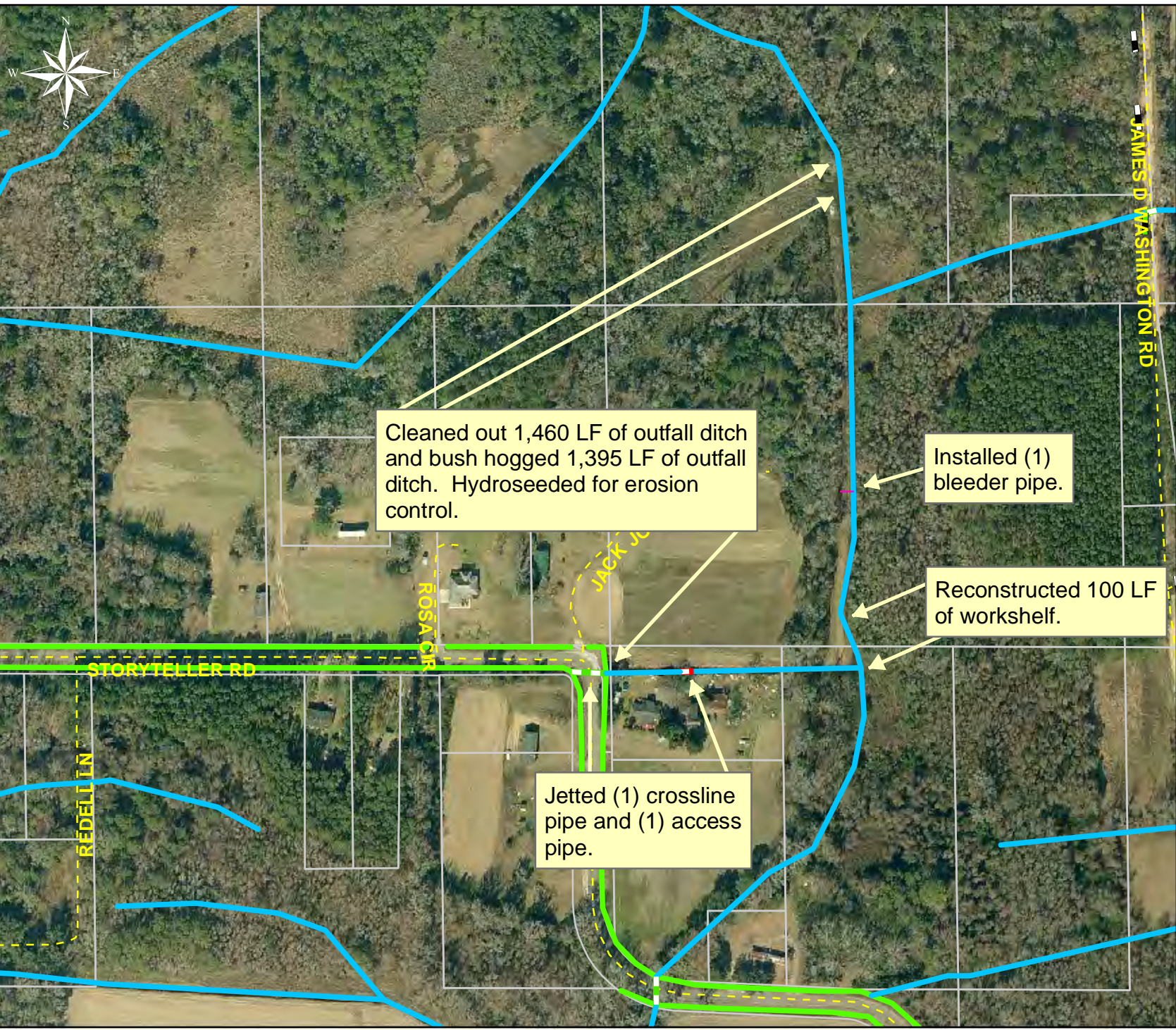
Before



During







Project: Storyteller  
Road Outfall  
Map 1

Activity: Drainage  
Maintenance

Project #:  
2011-562

Township: St.  
Helena Island

Completed:  
July 2010

**Legend**

**Drainage Type**

- River
- Stream
- Outfall
- Lateral
- Lateral Pipe
- Roadside
- Roadside Pipe
- Crossline
- D/W
- Access
- Piped
- Bleeder
- Parcels







Project: Storyteller  
Road Outfall  
Map 2

Activity: Drainage  
Maintenance

Project #:  
2011-562

Township: St.  
Helena Island

Completed:  
July 2010

**Legend**

**Drainage Type**

- River
- Stream
- Outfall
- Lateral
- Lateral Pipe
- Roadside
- Roadside Pipe
- Crossline
- D/W
- Access
- Piped
- Bleeder
- Parcels

